

FSE04 Series Rotary Position sensor



Rotary Potentiometer

Joystick

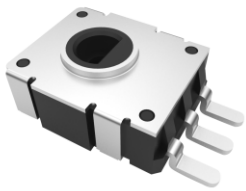
Slide Potentiometer

Trimmer Potentiometer

Encoder

Switch

Sensor



Feature

1. Angle/Position Sensor with more than 300,000 operating cycles developed for robot joint angle control and game controller L2 R2 position.
2. Miniature design of 4mm width * 5mm length.
3. Excellent smooth operation hand feeling.

Application:

- Robot joint angle control
- Game controller L2 R2 position

Recommended model:

- ◆ FSE04-P1B5KZ0

Electrical Characteristics

Total Resistance	1K-100K
Resistance Tolerance	±20%
Resistance Taper	B taper
Rated Voltage	DC 5.0V, AC 50V
Rated Power	0.01W
Linearity Tolerance	less than ±5%
Sliding Noise	less than 300mv
Insulated Resistance	≥100MΩ, DC250V, 1minute
Withstand Voltage	1 minute at AC 250V

Endurance Characteristics

Storage Temperature	-30°C to +70°C
Operating Temperature	-20°C to +70°C
Dry Heat	70±2°C, 240±2 hr, -30%≤ ΔTR≤+5%
Cold	-30±2°C, 300±5 hr, without load, ΔTR±20%
Damp Heat	70±2°C, 85%RH, 300±5hr, -5%≤ΔTR≤+35%
Temperature Cycle	-10~+70°C, 5 cycles, ΔTR≤±10%
Operating Life	Standard life: 300,000 cycles Long life: 5,00,000 cycles
Temperature Characteristic	70±3°C, 5 hr, -20%≤ΔTR≤+5%
Soldering Condition	Wave soldering: 255±5°C 3sec Manual soldering: 345±5°C 3sec
Operating Temperature Range	-20°C~+70 °C

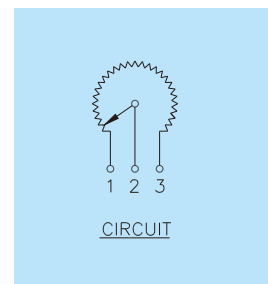
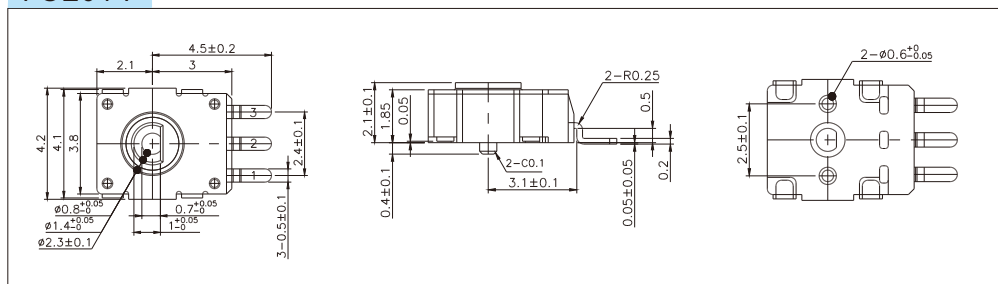
Mechanical Characteristics

Total Rotation Angle	360°
Rotational Torque	20mN·m
Pull Strength of Shaft	5N, 3sec
Push Strength of Shaft	30N, 3sec

HOW TO ORDER

FSE04-	P	1	B	5K	Z0
Model Series	Terminal Configuration	Terminal Length	Resistance Taper	Total Resistance	Electrical Angle Code
	P: SMD type H: TOP Adjust, Pc Pins	1: 1.5mm	B: Linear B	5k 10k	Z0: 280°

FSE04-P



FSE04-H

