

Feature

1. Insulated shaft style.
2. Carbon element.
3. Wide range of resistance tapers.
4. Long Life Type Available.

F24KP Series Rotary Potentiometer

Electrical characteristics

- Total Resistance.....1K Ω ~1M Ω
- Total Resistance Tolerance.....500 Ω <R<1M Ω : \pm 20%
R \leq 500 Ω or R \geq 1M Ω : \pm 30%
- Resistance Taper.....A,B,C
- Max. Operating Voltage.....Linear Taper B:AC 500V,Other Tapers : AC 250V
- Rated Power.....Linear Taper B:0.5W,Other Tapers : 0.25W
- Rotational Noise.....Less than 100mV
- Insulation Resistance.....More than100M Ω at DC 500V
- Withstand Voltage.....1 minute. at AC 1080V
- Residual Resistance.....Term.1-2: Less than 10 Ω
Term.2-3: Less than 10 Ω

Mechanical characteristics

- Total Rotational Angle.....300° \pm 10°
- Rotational Torque.....20 ~150 gf.cm
- Stopper Strength.....5.0Kgf.cm Min.
- Push-Pull Strength.....10.0Kgf Min
- Bushing&Nut Tight Strength.....7.0Kgf.cmMin

Switch characteristics

- Contact Resistance.....Less than 50m Ω
- Rated Power.....1.0 A at AC/DC 125V
- Rotational Angle.....50° \pm 10°
- Switch Torque.....300 ~800 gf.cm.
- Switch Life.....15,000 Cycles Min.

Durability

- Rotational Life.....15,000 Cycles Min.
- Operating Temperature Range.....-10°C ~ +70°C

HOW TO ORDER



Model Series

Code	Switch Type
N	No Switch
S	With Rotary Switch

Code	Terminal Configuration
P	Top Adjust, Solder Lugs
See Note 3	

Shaft Type & Length
See Note 1

Full CCW Position
See Note 2

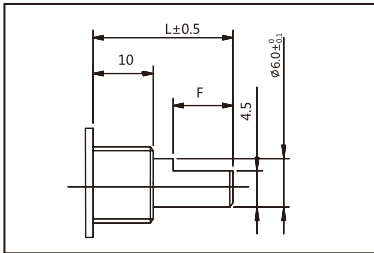
Code	Resistance Taper
A	Audio (15A)
B	Linear (1B)
C	Reverse Audio(15C)
D	Audio (10A)

Total Resistance
1K
2K
5K
10K
20K
50K
100K
200K
500K
1MEG

Code	Operation Life
(Blank)	Std. Life w/o anti-sulfur
1	Std. Life w/ anti-sulfur
2	Long Life w/ anti-sulfur(No Switch)
3	Long Life w/o anti-sulfur(No Switch)

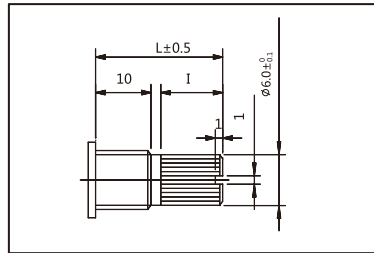
Note 1: Shaft Type & Shaft Length:

F-Type



Code	1	2	3
L	15	20	25
F	5	10	12

Y-Type

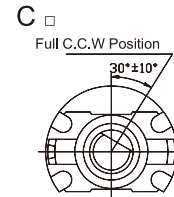


Code	1	2	3
L	15	20	25
I	5	10	12

Note 2: Full C.C.W position

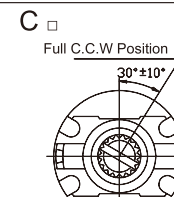
F-Type Shaft

Full C.C.W Position Type



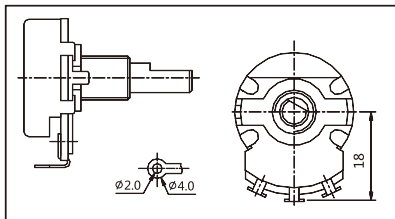
Y-Type Shaft

Full C.C.W Position Type

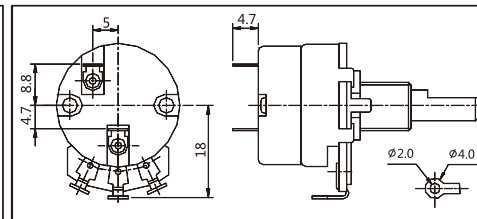


Note 3: Terminal Configuration

P-TYPE



P-TYPE with switch



F24KP-SPF With rotary switch, PC Pins, F-type shaft

